

Test Case-54

Test Name: RJIL-IP-QA-DS-SYS-056

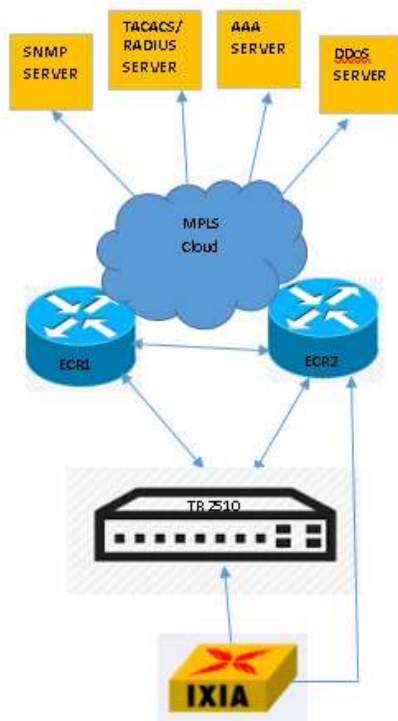
Test Objective: To check L3VPN/L2 VPN service with MDS/ EDS as part of setup

Test Configuration:

Vlan "VLAN ID"

```
interface GigaEthernet0/3
switchport mode trunk
switchport trunk vlan-allowed "VLAN ID"
!
```

Test Set up (Including Pre requisites): Switch , ECR1, ECR2, IXIA



Procedure: Connect switch to ECR1, ECR2 and IXIA

Action:

1

Need to configure the VLAN on the switch port coming from uplink and downlink

Response:

1

Switch will pass through the vlans L2 and L3 traffic towards uplink and downlink

Expected Result: Switch will pass through the vlans L2 and L3 traffic towards uplink and downlink

Actual Result:

GUICHECK#sh run int gi 0/1

Building configuration...

Current configuration:

!

interface GigaEthernet0/1

switchport enhanced-link

switchport trunk vlan-allowed 111,333,335,883,885

switchport mode trunk

ethernet cfm ENABLE

ethernet cfm mep add mdnf STRING mdn east manf STRING man east mepid 1

ethernet cfm mep ENABLE mdnf STRING mdn east manf STRING man east mepid 1

erps 1 ring-port

erps 1 cfm-disable

erps 1 mep down md east ma east level 7 local 1 remote 2

GUICHECK#

GUICHECK#sh int gigaEthernet 0/3

GigaEthernet0/3 is up, line protocol is up

Ifindex is 3, unique port number is 3

Hardware is Giga-TX, address is 5ccc.ff13.20ec (bia 5ccc.ff13.20ec)

MTU 9216 bytes, BW 1000000 kbit, DLY 10 usec

Encapsulation ARPA

Auto-Duplex(Full), Auto-Speed(1000Mb/s), Flow-Control Off

5 minutes input rate 49400000 bits/sec, 4116 packets/sec

5 minutes output rate 49397333 bits/sec, 4116 packets/sec

Received 37053 packets, 55575000 bytes

0 broadcasts, 0 multicasts

0 discard, 0 error, 0 PAUSE

0 align, 0 FCS, 0 symbol

0 jabber, 0 oversize, 0 undersize

0 carriersense, 0 collision, 0 fragment

0 L3 packets, 0 discards, 0 Header errors

Transmitted 37048 packets, 55572000 bytes

0 broadcasts, 0 multicasts

0 discard, 0 error, 0 PAUSE

0 sqettest, 0 deferred, 0 oversize

0 single, 0 multiple, 0 excessive, 0 late

0 L3 forwards

GUICHECK#sh int gigaEthernet 0/1

GigaEthernet0/1 is up, line protocol is up

Ifindex is 1, unique port number is 1

Hardware is Giga-FX, address is 5ccc.ff13.20ea (bia 5ccc.ff13.20ea)

MTU 9216 bytes, BW 1000000 kbit, DLY 10 usec

Encapsulation ARPA

Full-duplex, Auto-Speed(1000Mb/s), Flow-Control Off

5 minutes input rate 51603525 bits/sec, 4304 packets/sec

5 minutes output rate 51600544 bits/sec, 4302 packets/sec

Received 38747 packets, 58053966 bytes

0 broadcasts, 8 multicasts

0 discard, 0 error, 0 PAUSE

0 align, 0 FCS, 0 symbol

0 jabber, 0 oversize, 0 undersize

0 carriersense, 0 collision, 0 fragment

0 L3 packets, 0 discards, 0 Header errors

Transmitted 38724 packets, 58050612 bytes

0 broadcasts, 3 multicasts

0 discard, 0 error, 0 PAUSE

0 sqettest, 0 deferred, 0 oversize

0 single, 0 multiple, 0 excessive, 0 late

0 L3 forwards

GUICHECK#